

INVESTIGATING PLACE-BASED RURAL INNOVATION SYSTEMS

.... AND THEIR IMPLICATIONS FOR RURAL POLICY

PLACE MATTERS!



Innovation happens *somewhere in particular* and is *shaped by* that place.

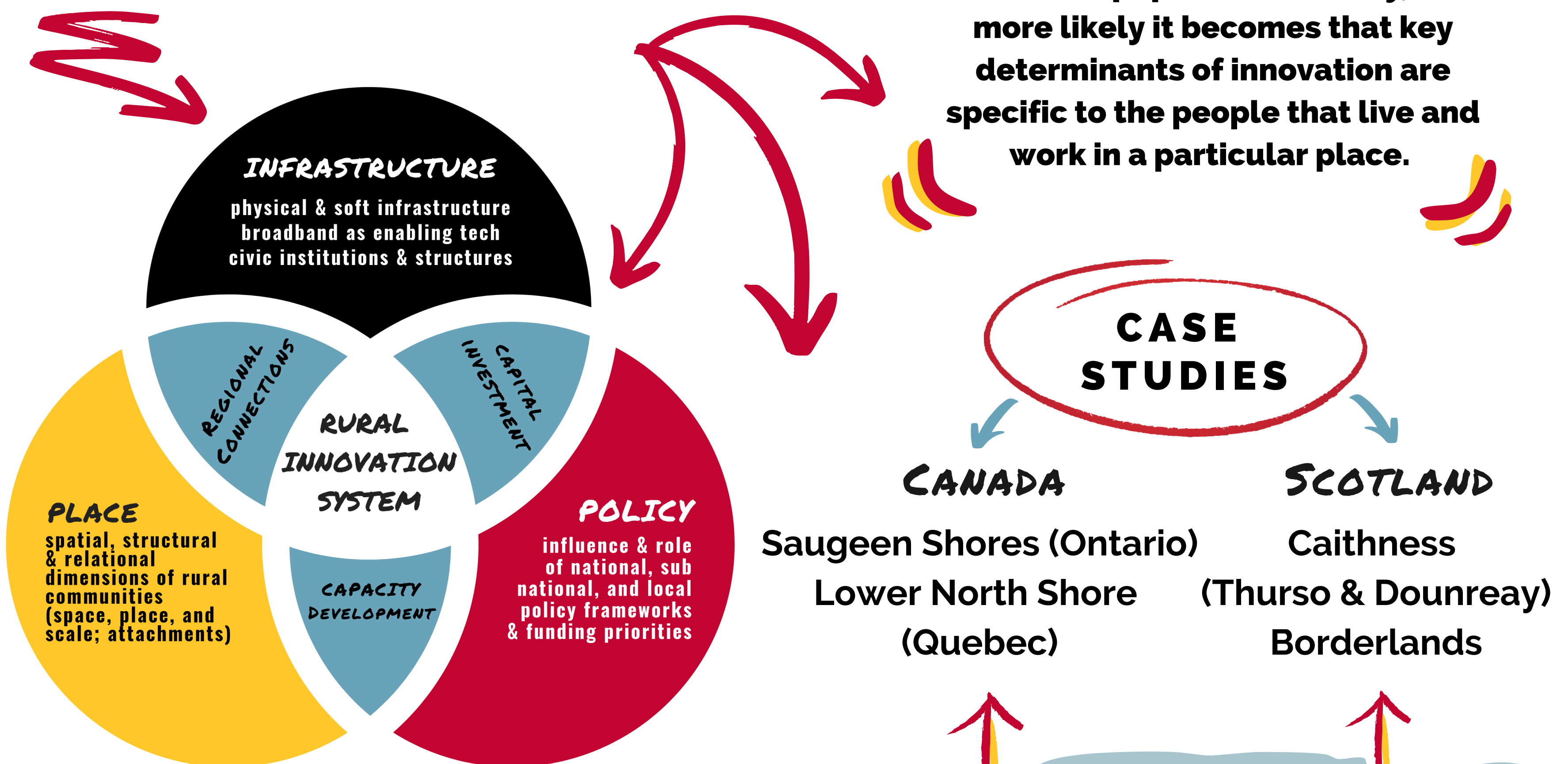
KEY QUESTIONS

- Can innovation systems be modeled at the community level in rural contexts?
- What are the spatial, relational, and structural dimensions involved in place-based rural innovation systems?
- How have various policy legacies & discourses (eg. NPM, global restructuring, smart cities etc.) shaped rural innovation frameworks?
- What insights might these frameworks offer to policy influencers in developing a place-sensitive lens for strategic foresight in rural policy planning?

RESEARCH IN PROCESS

- Develop criteria and investigative framework for completing a comparative case study of rural community innovation systems
- Explore whether the socio-economic elements of place (at the community level) are fundamental to the innovation process itself
- Investigate how rural innovation systems operate in the interplay between the experience of place and the constraints of spatial realities
- Investigate the comparative policy context and implications of place-based rural innovation

Research on rural innovation struggles to adapt generally accepted, urban-centred frameworks in rural contexts. Conceptualizing rural communities as systems offers insights into the complex and evolving relationships at play, as well as the spatial realities that shape rural innovation. Place-based approaches may offer the best opportunity for re-imagining current innovation systems theory for rural applications. The lower the population density, the more likely it becomes that key determinants of innovation are specific to the people that live and work in a particular place.



LET'S TALK!

S. Ashleigh Weeden,
PhD Candidate
University of Guelph
(SEDRD, OAC)

weedens@uoguelph.ca

@ashleighweeden

www.ruraldev.ca
www.ruralfutures.ca

UNIVERSITY
of GUELPH

